



If changes are made to the C187 dash config, it can be re-saved and uploaded to the dash in the same fashion that it was retrieved from it. In this case, the 'Send Configuration' will be used to upload the new version of the dash config. This will need to be done in the case that an updated version of the dash config is released.

To upload a new dash config to the device, follow these steps:

1. Open the C187 Dash Manager
2. Connect the computer to the data port (ethernet) located in the glove box area.
3. Open the dash configuration you wish to send to the dash.
4. Select Online -> Send Configuration

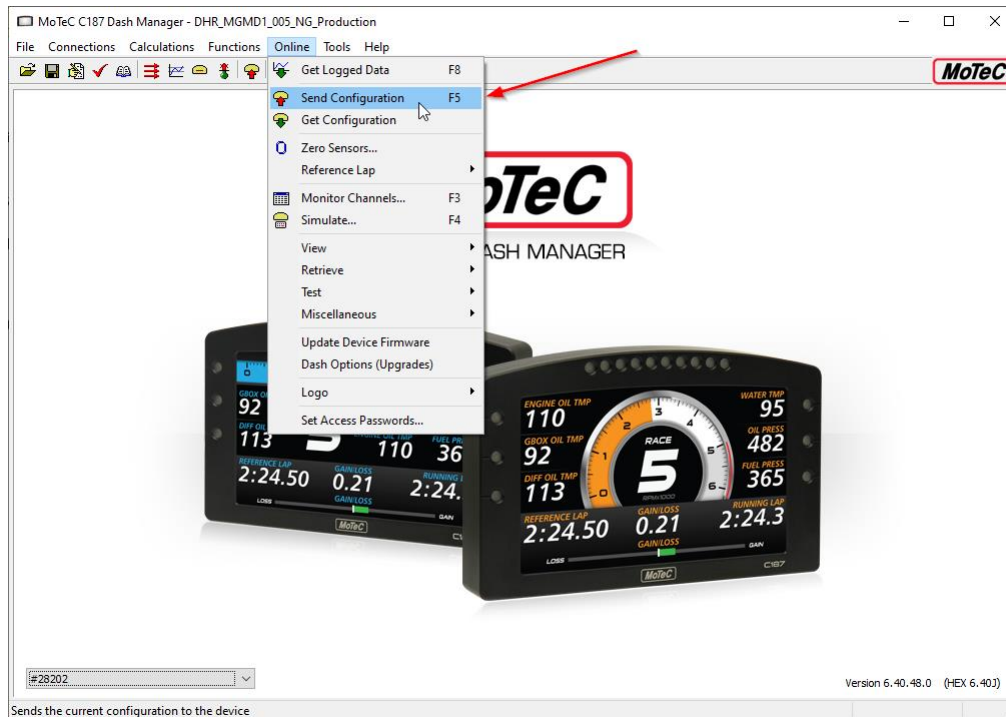


Figure 4.22: MoTeC Dash Manager – sending a new configuration.