

FORD PERFORMANCE



February 14, 2025

Technical Service Bulletin – 39

Rear Fascia Mount Repair

Purpose: To support fascia with damaged mounts. This is the only homologated fascia repair allowed.

New parts

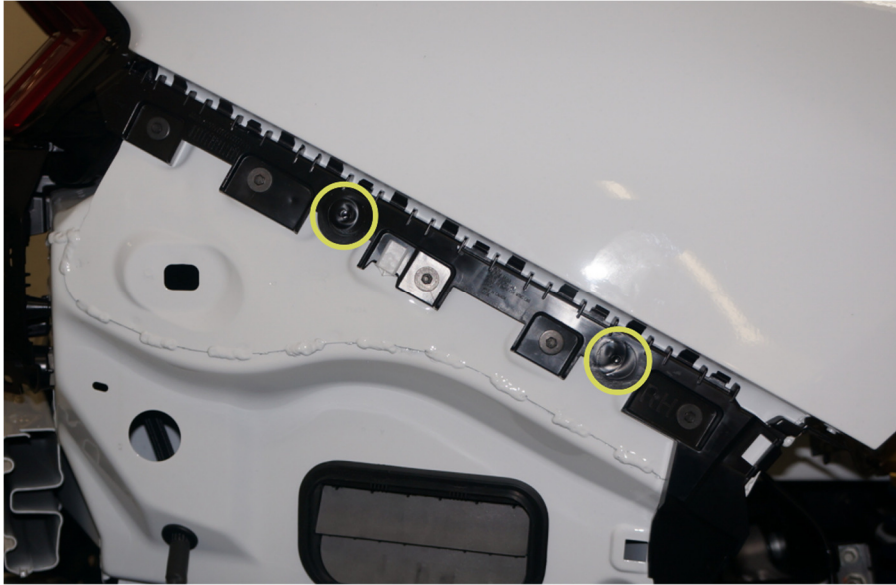
| Description | QTY | Part Number | Supplier |
|------------------------------------|-----|-------------|--------------|
| Quik-Latch Mini, Machined Aluminum | 4 | QL-25-S | Quik-Latch * |
| Quik-Latch Mini, Polished Aluminum | 4 | QL-25-SP | Quik-Latch * |
| Quik-Latch Mini, Anodized Black | 4 | QL-25-SB | Quik-Latch * |
| Quik-Latch Mini, Anodized Red | 4 | QL-25-RD | Quik-Latch * |
| Quik-Latch Mini, Anodized Blue | 4 | QL-25-BU | Quik-Latch * |

*All available finishes for the Quik-Latch Mini are legal. Only four Quik-Latches are required per vehicle.

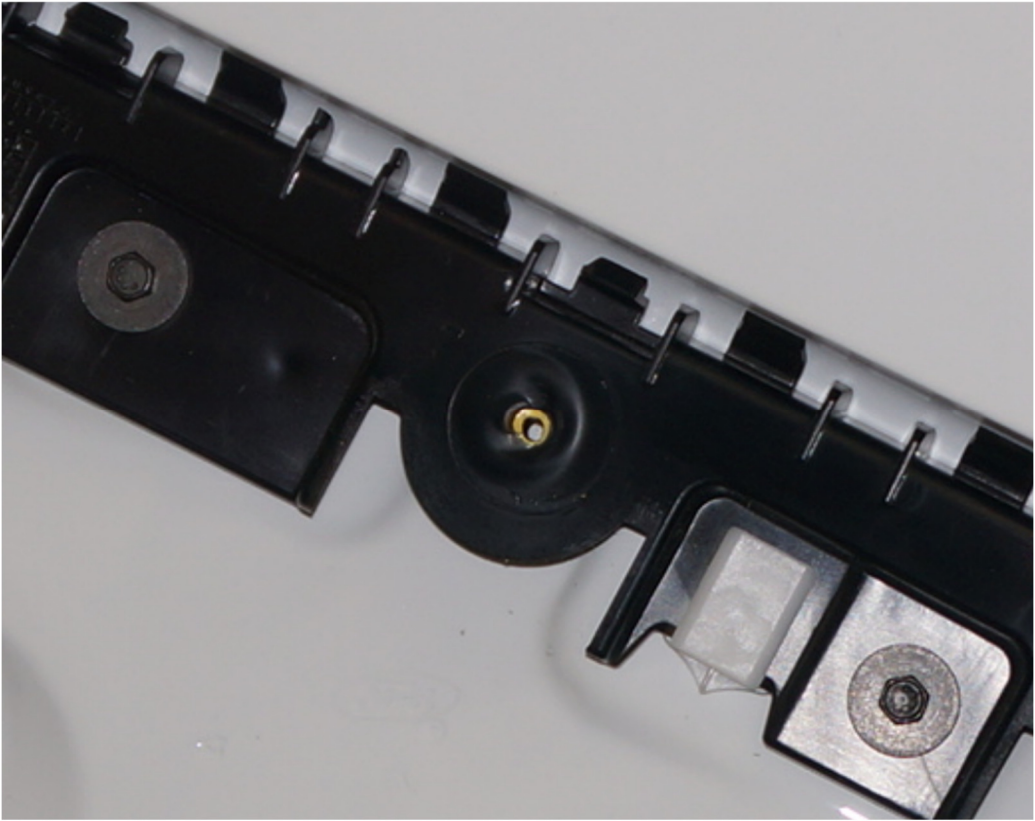


Installation

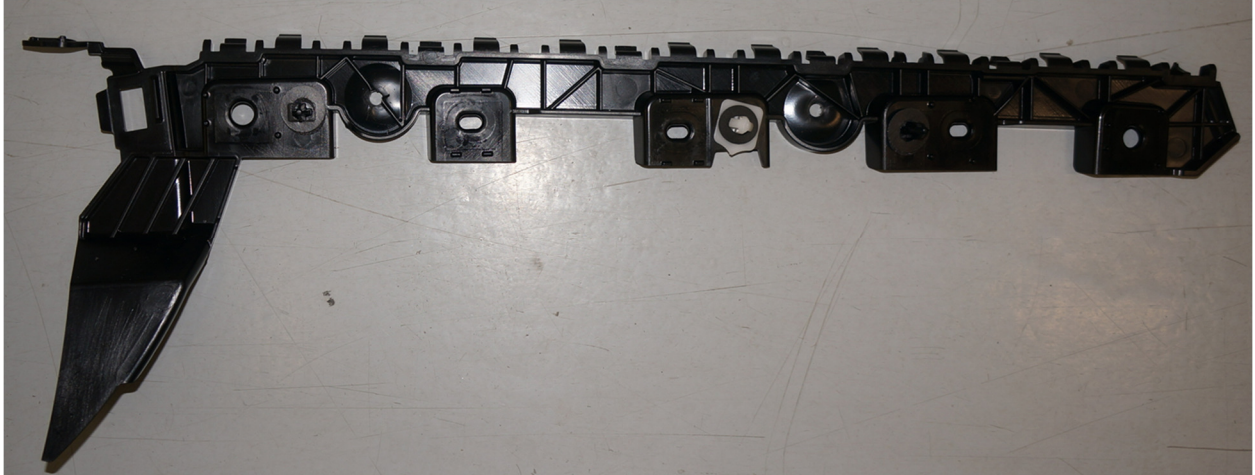
Remove rear fascia and locate the two round dimples on the rear bumper corner brackets.



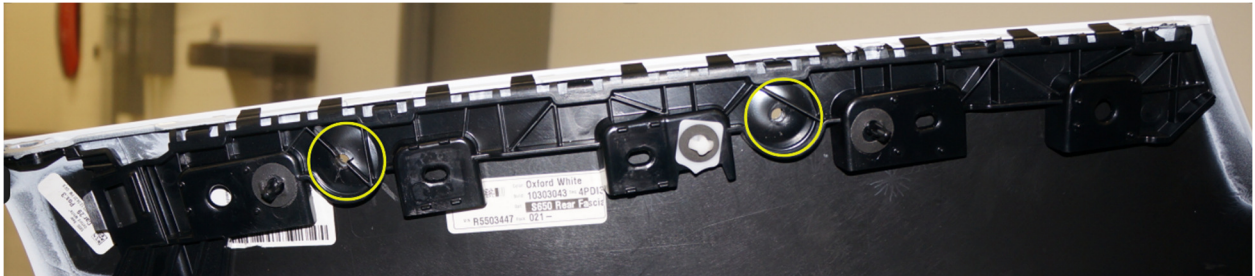
Mark and drill the dimples with a 1/8" pilot through the bracket. Continue through the sheet metal, two per side.



Remove brackets from body



Snap bracket onto Fascia and drill 1/8" pilot hole through the fascia



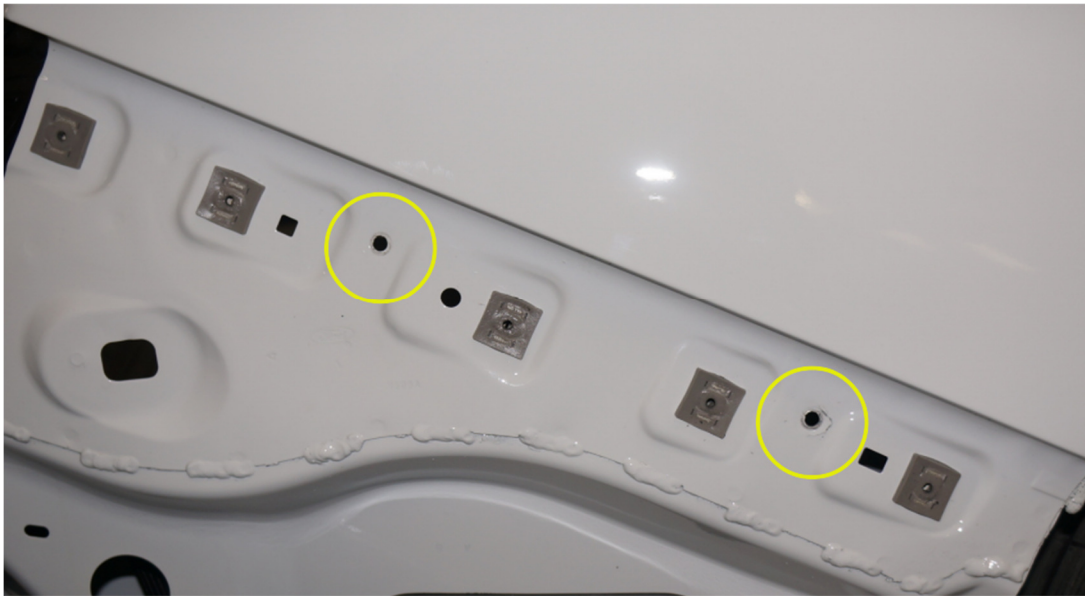
Remove brackets from fascia and open the 1/8" holes to 3/4"



Open the 1/8" pilot holes in the bracket to 1 1/8"



Open the 1/8" pilot holes in body to 1/4"



Install the four Quik-Latch studs only using a washer on the inside of the body.



Reinstall bracket



Install Quik-Latches on fascia



Reinstall fascia and adjust studs to desired length

