

# FORD PERFORMANCE



**February 19, 2025**

## **Technical Service Bulletin – 38**

### **Front Fascia Mount Repair**

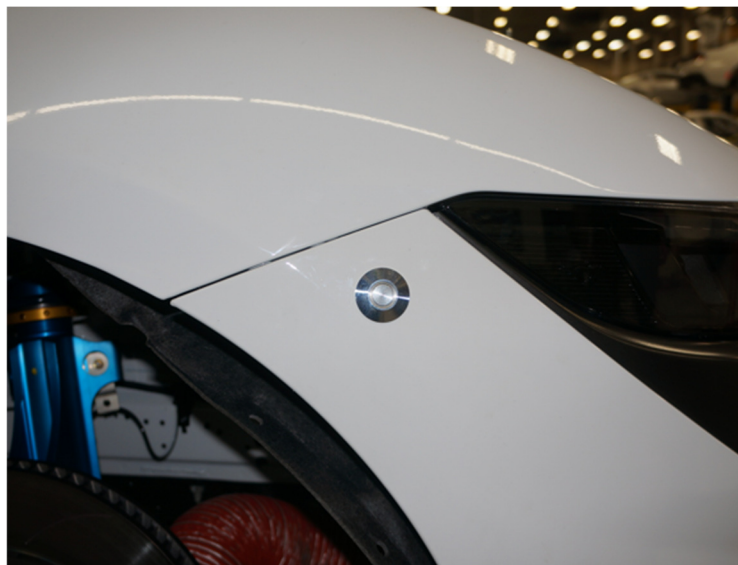
Purpose: To support fascia with damaged corner mounts. This is the only homologated repair allowed.

#### **New parts**

| Description                        | QTY | Part Number | Supplier     |
|------------------------------------|-----|-------------|--------------|
| Quik-Latch Mini, Machined Aluminum | 2   | QL-25-S     | Quik-Latch * |
| Quik-Latch Mini, Polished Aluminum | 2   | QL-25-SP    | Quik-Latch * |
| Quik-Latch Mini, Anodized Black    | 2   | QL-25-SB    | Quik-Latch * |
| Quik-Latch Mini, Anodized Red      | 2   | QL-25-RD    | Quik-Latch * |
| Quik-Latch Mini, Anodized Blue     | 2   | QL-25-BU    | Quik-Latch * |

\*All available finishes for the Quik-Latch Mini are legal. Two Quik-Latches are required per vehicle.

|                      |   |             |            |
|----------------------|---|-------------|------------|
| Quik-Latch Long Stud | 2 | QL-25-08-04 | Quik-latch |
|----------------------|---|-------------|------------|

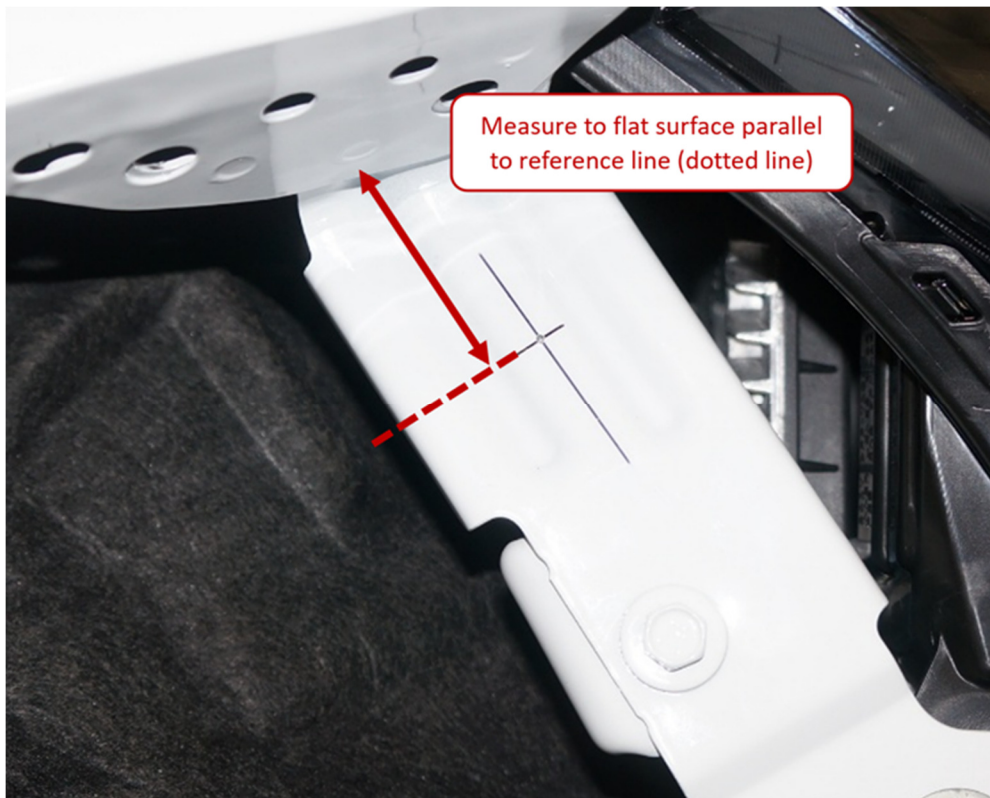


## Installation

Remove front fascia and locate the vertical front fascia support on fender



Center punch for the Quik-Latch on the center rib 1 3/8" down from the top



Drill a 1/8" hole in the center rib 1 3/8" down from the top



Open the 1/8" hole up to 1/4".

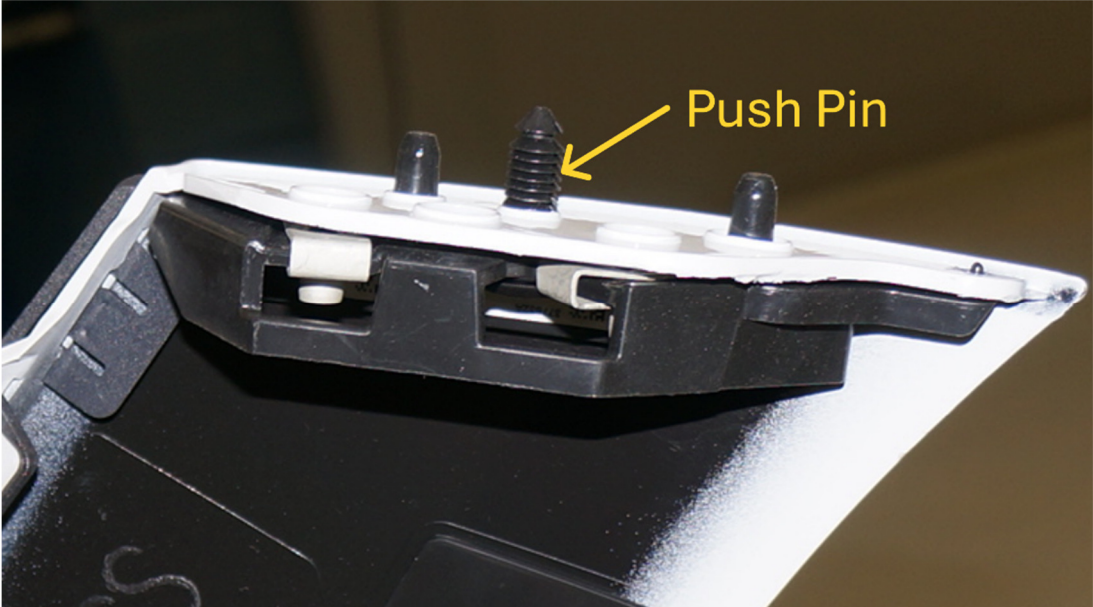




Install Quik-Latch long stud where the head of the stud is just flush with the fender.



Remove fascia to fender bracket by pulling push pin



Shown with bracket removed

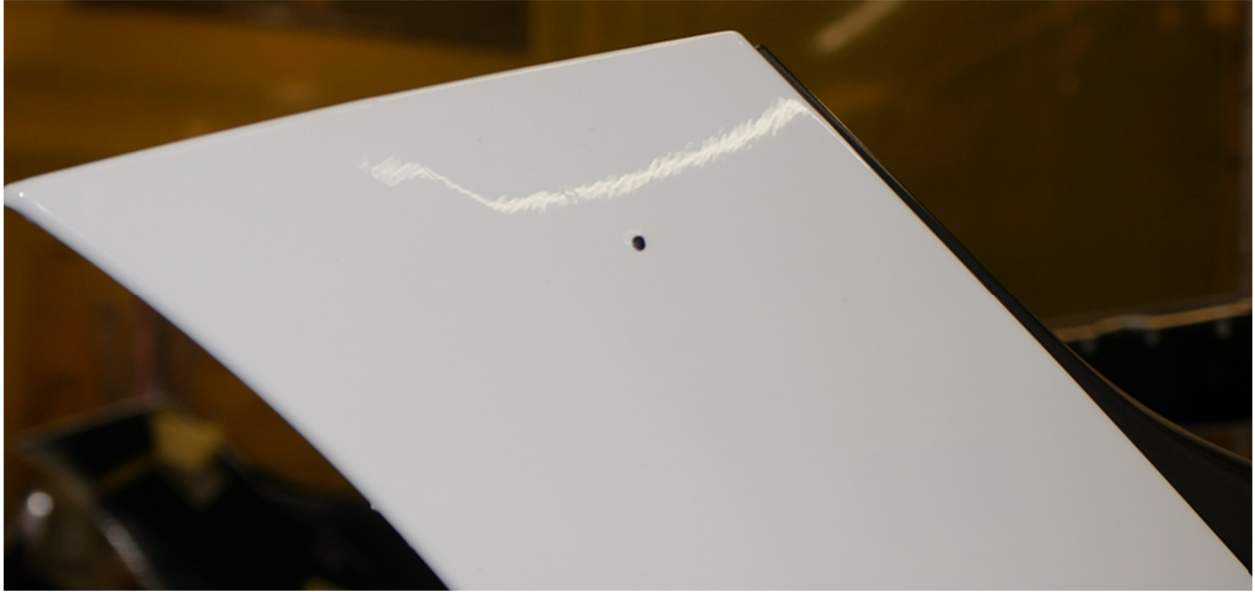


Align the fascia back on the vehicle in the production position, then tap on the fascia over the Quik-Latch ball end stud with the palm of your hand to dimple the back of the fascia where the Quik-Latch is to be installed

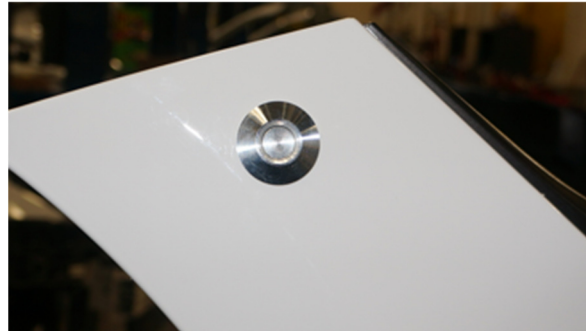
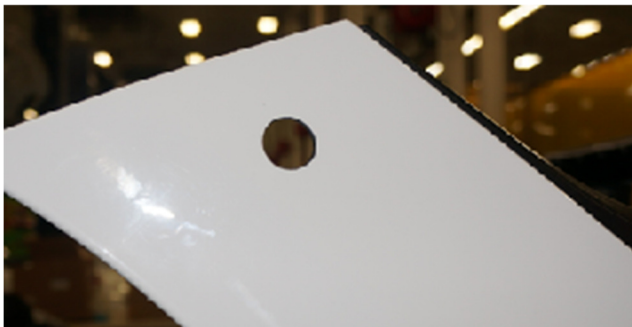




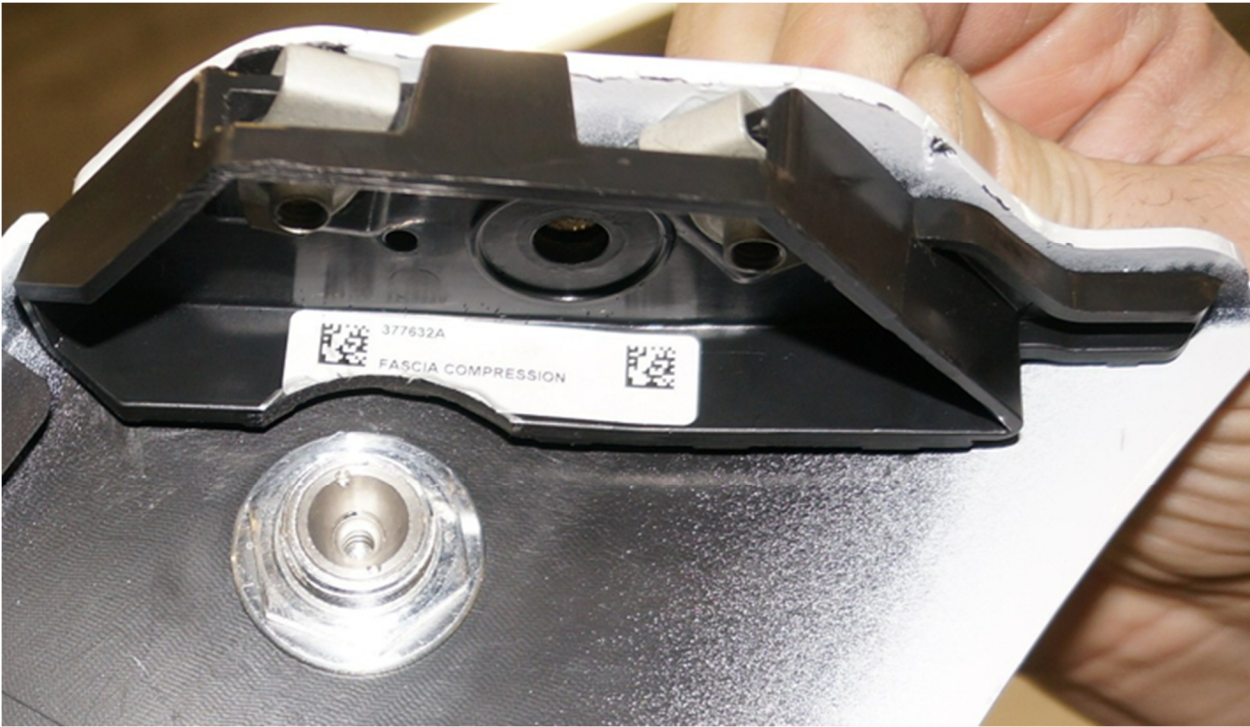
Drill 1/8" pilot hole through the fascia.



Open the fascia holes to 3/4" and install buttons.



Clearance and reinstall fender brackets



Reinstall Fascia and adjust studs to desired length

